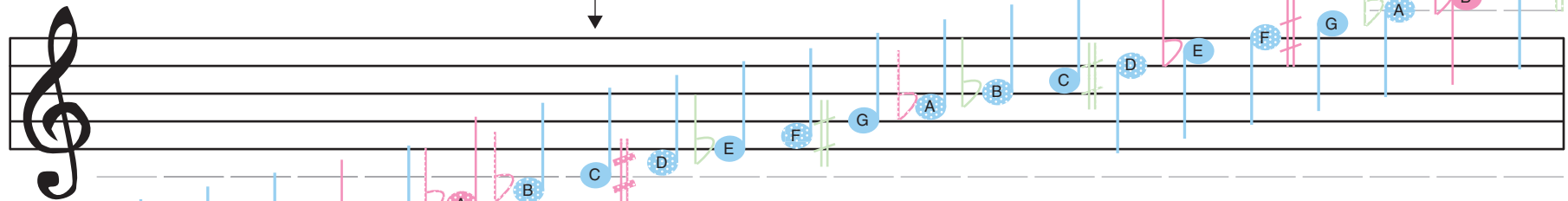


Chromatic Musical Scale and Diatonic Harmonica (Key of C) Tablature

~ All notes have been moved one octave down on the staff for ease of presentation.
 E.g., When reading standard musical notation, the first note—"C"—would appear here



	C	D	E	F	G	A	B	C	D	E	F	G	A	B	C	D	E	F	G	A	B	C
Naturals	+1	-1	+2	-2''	+3	-3''	-3	+4	-4	+5	-5	+6	-6	-7	+7	-8	+8	-9	+9	-10	+10'	+10
Sharps #	-1'			-2'				-4'			+5 ^o				-7 ^o			+9 ^b				-10 ^o
Flats b			+1 ^o			-3'''	-3'			+4 ^o				-6'	+6 ^o			+8'			-9 ^o	+10'''

- + = blow
- = draw
- ' = halfstep bend
- '' = two halfsteps (whole step) bend
- ''' = three halfsteps bend
- o = over blow/draw

Key of C Harmonica

Overblows	E ^b	A ^b	C	E ^b	F [#]	B ^b				
Blow bends										B ^b
Blows	C	E	G	C	E	G	C	E	G	C
Draws	D	G	B	D	F	A	B	D	F	A
Draw bends	C [#]	F [#]	B ^b	C [#]	A ^b					
	F	A								
	A ^b									
Overdraws							C [#]	F	A ^b	C [#]